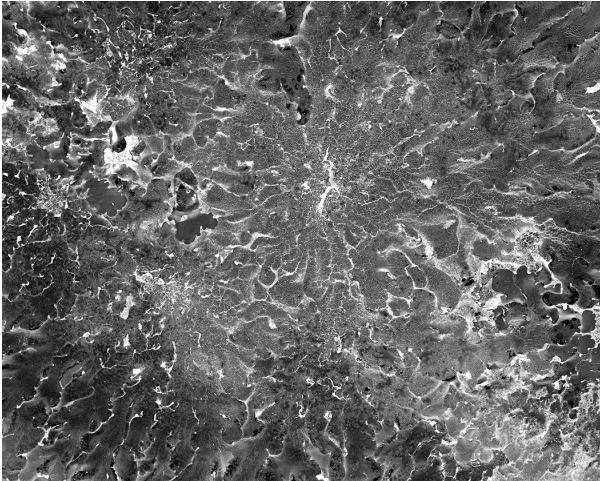


# B E N R U B I G A L L E R Y

## KATHERINE WOLKOFF, THE CRITICAL ZONE

January 7 – March 2, 2019

Opening Reception: Thursday, January 24, 6-8pm



*Lichen, Flavoparmelia caperata, 2017*

Benrubi Gallery is pleased to announce *The Critical Zone*, an exhibition of large-scale gelatin silver prints, the gallery's first exhibition of work by Katherine Wolkoff.

In Wolkoff's fourth New York solo exhibition, the artist presents new landscape photographs that describe the geological, botanical and zoological markings visible in "the critical zone," earth's permeable layer which extends from the tops of the trees to the bottom of the ground water. Scientists argue that this zone—where rock, soil water and air meet—will characterize the future environmental health of the earth.

Like a scientific researcher, Wolkoff travels to public lands throughout the United States to photograph the landscape of the critical zone. She uses a range of techniques from a 4x5 view camera to a flatbed scanner, utilizing subjective post-production techniques. Evolving beyond her series of natural typologies such as *Deer beds* and *Birds*, Wolkoff's new photographs span a more diverse range of subjects found within the critical zone. This exhibition presents her first body of black and white photographs.

The elements collected for these photographs show millions of years of geologic change—from evidence of sliding glaciers to traces of disappeared oceans. Today, these places are being affected in new ways due to rising temperatures and the effects of climate change in our current epoch, the Anthropocene. Black sand is churned up by hurricanes, invasive insects consume trees, and icebergs melt in plain sight.

**Katherine Wolkoff** (b. 1976) received her BA from Barnard College and her MFA from Yale School of Art. Wolkoff's work has been exhibited in solo and group exhibitions nationally and internationally including the QPN Festival, France; Aperture Gallery, New York; and Palais de Tokyo, Paris. Her works are included in the public collections of the Addison Gallery of Art, the Norton Museum of Art and the Yale University Library, and they have been featured in publications including the *New Yorker*, the *New York Times Magazine*, and *Artforum*.

For press and other inquiries, please email [info@benrubigallery.com](mailto:info@benrubigallery.com)

Gallery hours: Tuesday – Saturday, 10am-6pm

# B E N R U B I G A L L E R Y

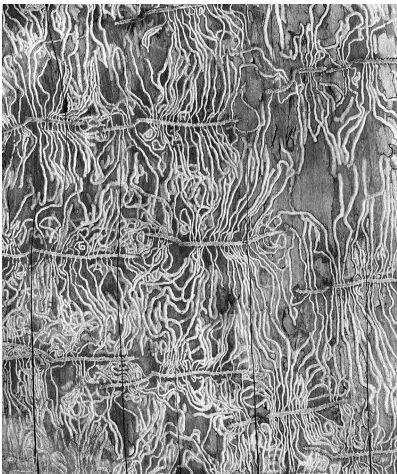
## KATHERINE WOLKOFF, THE CRITICAL ZONE



*Badlands, Malum terra, 2018*



*Salt River, Flumen salis, 2018*



*Bark Beetle #1, Scolytus multistriatus, 2016*