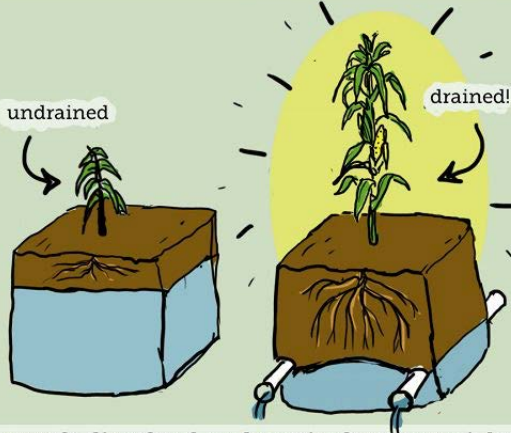
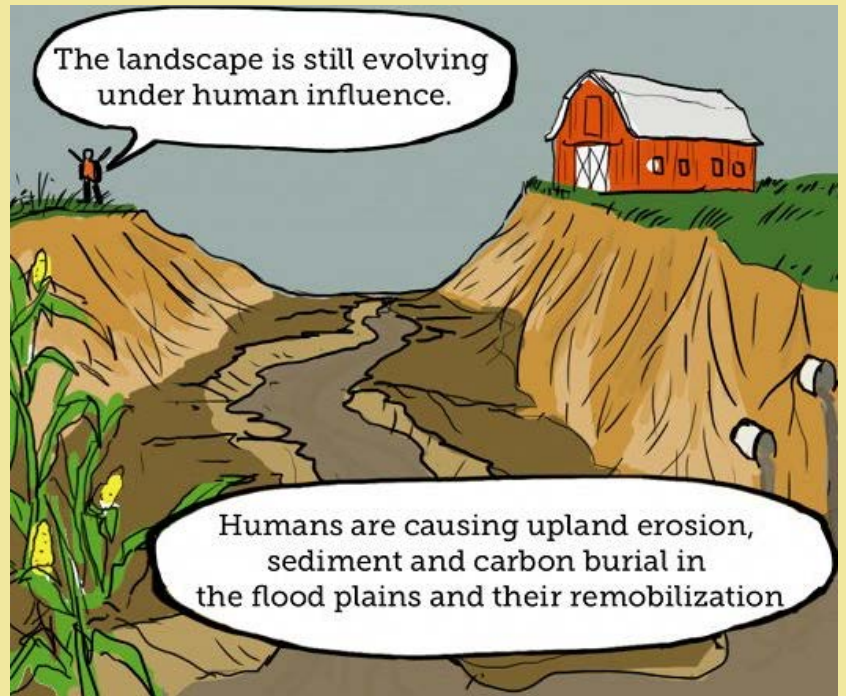




The glaciated landscape of the midwestern US has been modified through installation of tile drains, and existing streams were modified to reduce moisture and increase agricultural productivity.



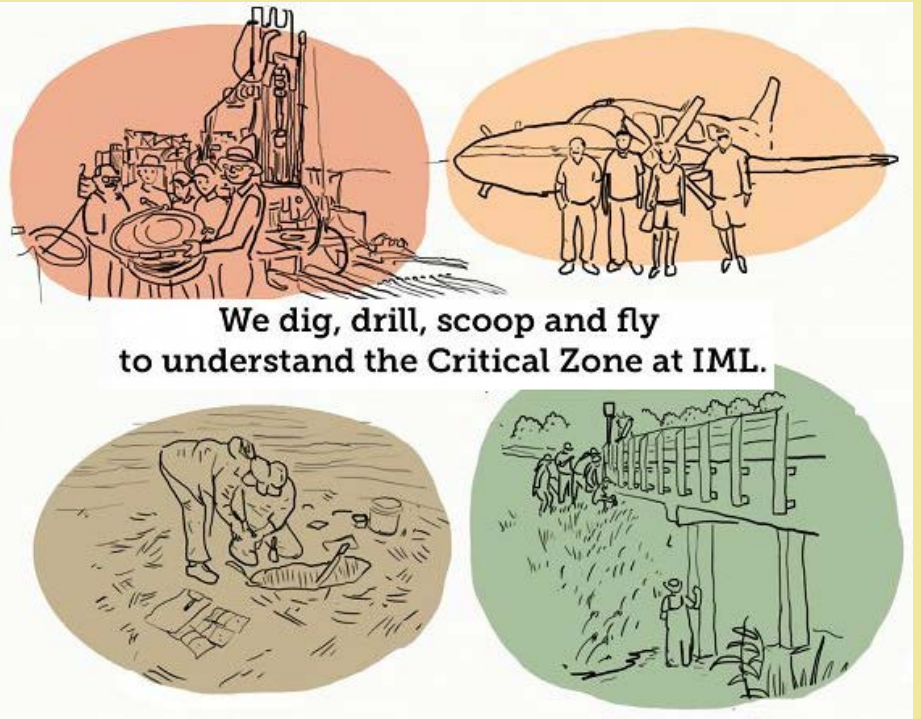
As a result dissolved and particulate material now move faster through the landscape and streams.



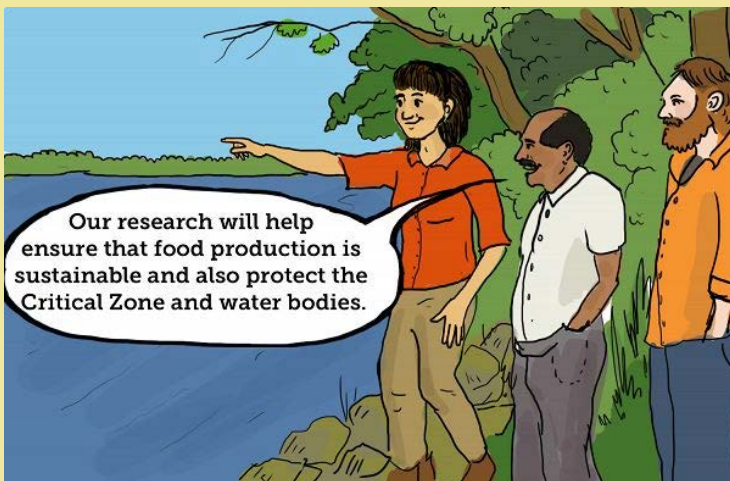
The loss of soil structure and soil organic matter have changed the transport of water, solutes, carbon, and sediment.



Increased nutrient and water loss in human modified soils.



We dig, drill, scoop and fly to understand the Critical Zone at IML.



Storyboard by Praveen Kumar & Justin Richardson

Illustrations by Alana McGillis

With support from the National Science Foundation



Opinions presented in the comic are only those of the authors and do not necessarily reflect the views of the U.S. CZO National Program or the National Science Foundation.