

Boulder Creek

Critical Zone Observatory



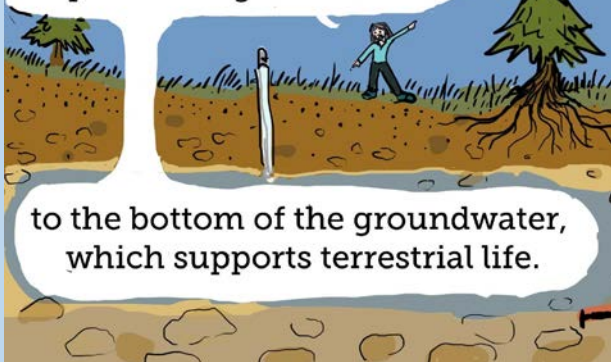
Hi, I am Dr. Suzanne Anderson and I lead research conducted at the Boulder Creek CZO



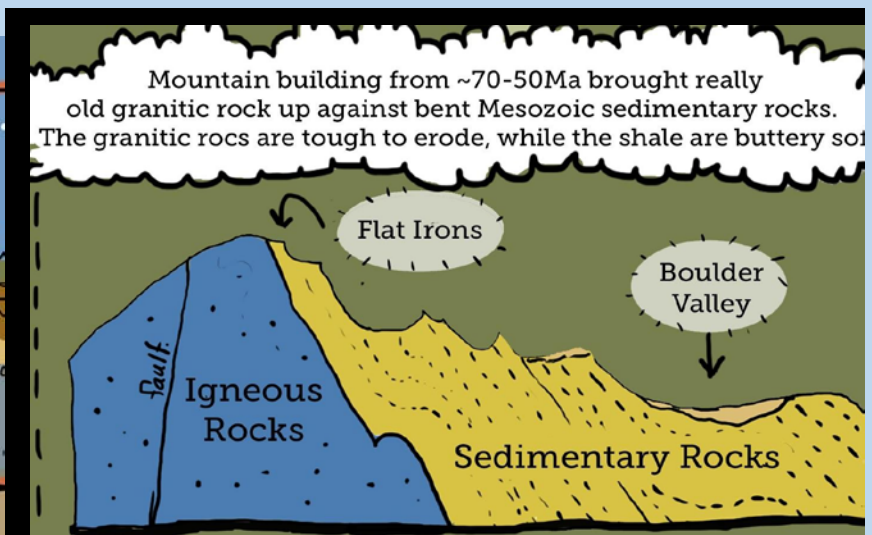
The Boulder Creek CZO encompasses alpine mountains of the front range down to the High plains in Colorado.

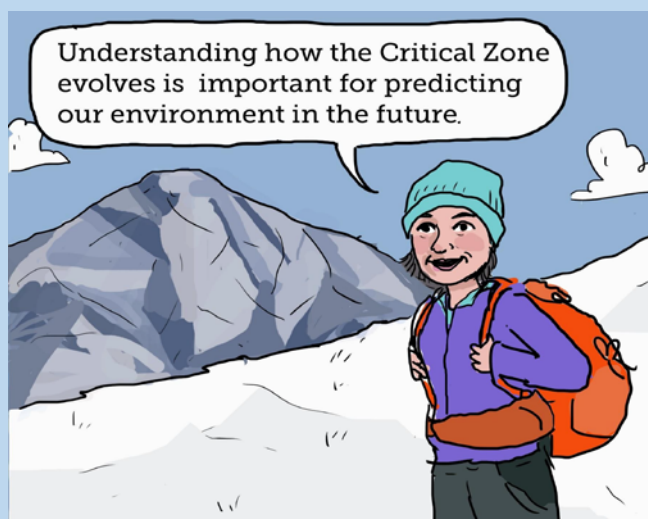
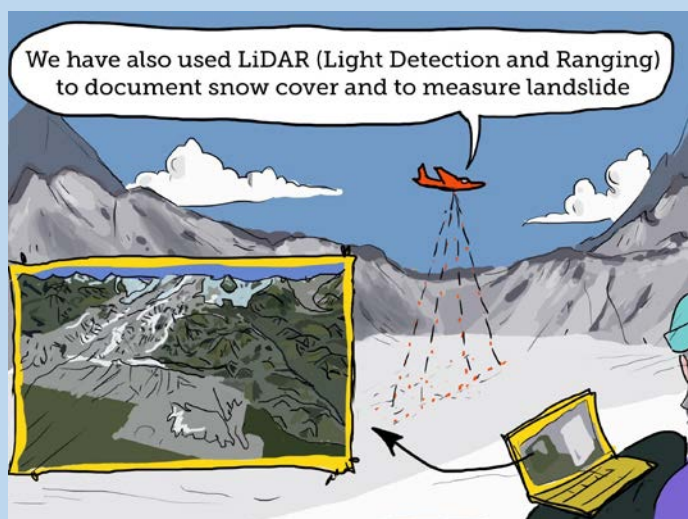
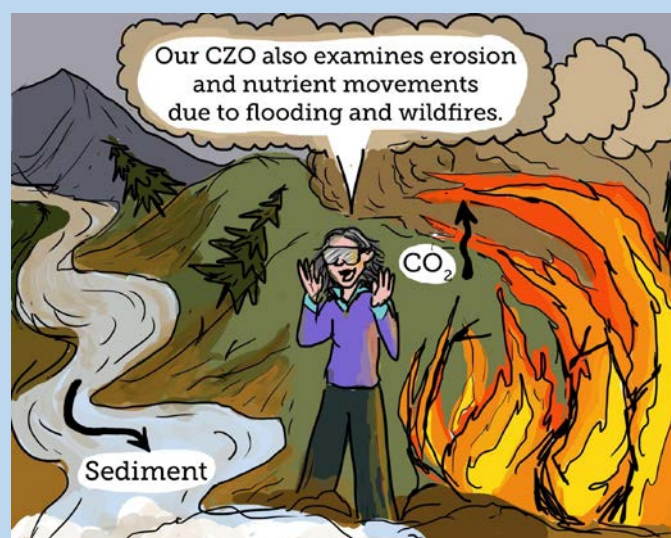
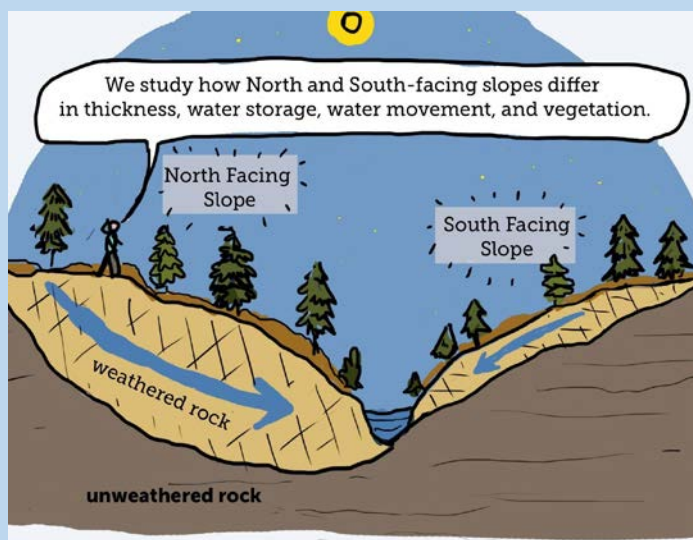
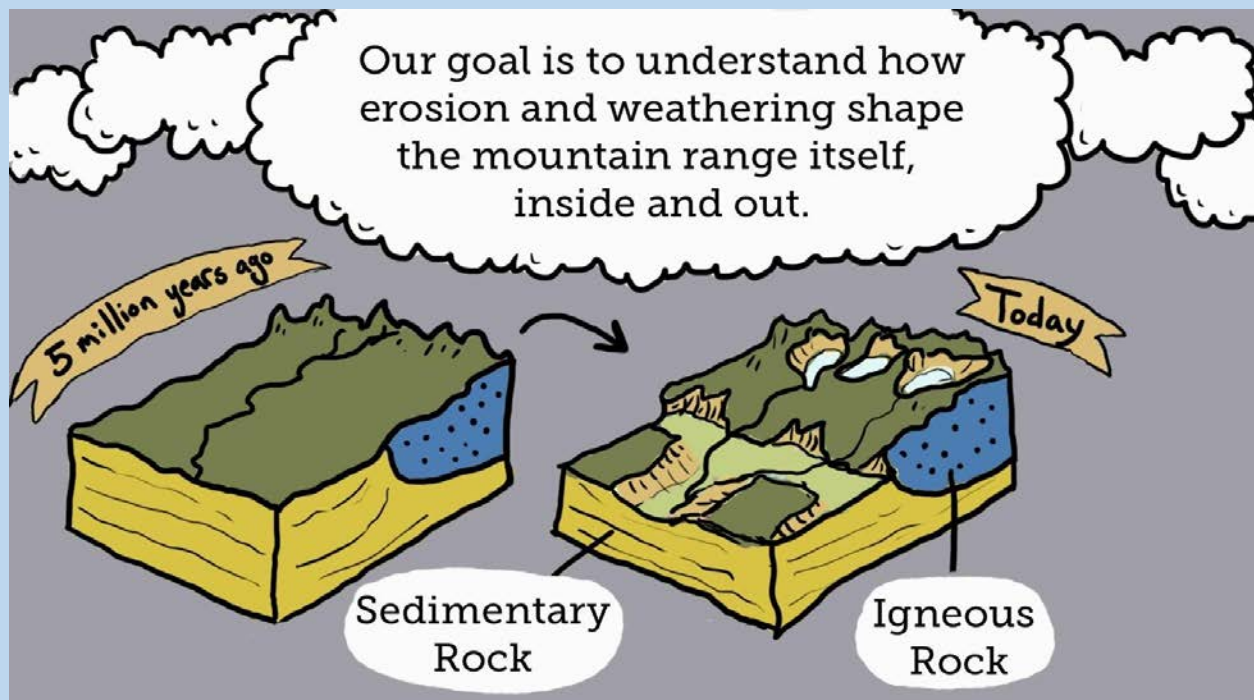


We study the Critical Zone, the region from the top of the vegetation



Mountain building from ~70-50Ma brought really old granitic rock up against bent Mesozoic sedimentary rocks. The granitic rocks are tough to erode, while the shale are buttery soft





Storyboard by Justin Richardson & Suzanne Anderson
 Illustrations by Alana McGillis
 With support from the National Science Foundation

